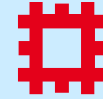


# THE EXOSEX CLOTHES MOTH SYSTEM AND ENGLISH HERITAGE

English Heritage is responsible for a wide range of collections ranging from fine art to archaeology. They are responsible for approximately 140 sites throughout England including large and small historic properties, museums and purpose built stores.



## ENGLISH HERITAGE

### WHAT IS THE EXOSEX CLOTHES MOTH SYSTEM?

Exosex is a non-chemical & non-toxic 'pest confusion' treatment designed specifically to control the highly destructive larvae of the Webbing clothes moth. It uses a synthetic female pheromone to attract male clothes moths into a dispenser where the Exosex 'Entostat' powder combined with the pheromone is situated. Males are 'lured' to the dispensers and upon entering the powder coats their bodies. The senses of the coated moths are overwhelmed and they cannot detect females as a result. As they leave the dispenser, they then attract other male clothes moths and so spread the confusion effect. This means that the females do not mate and lay non-viable eggs resulting in far fewer larvae.



Exosex CL Dispenser with pheromone lure

### WHERE DID WE IMPLEMENT THE SYSTEM?

We implemented the system at Marble Hill House, London in 2007 as an increase in webbing clothes moth numbers was recorded in both 2004 and 2006. This continuing increase caused concern so we took the decision to start a trial of the Exosex moth confusion technique in July 2007.



Marble Hill House, London

### SETTING UP THE EXOSEX SYSTEM

We had to show discretion as to where we placed the Exosex dispensers as the house is open to the public at weekends and is also used for private functions. The new CL hanging dispensers are much smaller than the previous CLM designs and as a result we have found them to be easier to site under items of furniture, against walls, behind screens, on top of four poster beds, in fireplaces and on stairwells. We currently use 24 of these throughout the house in various locations.



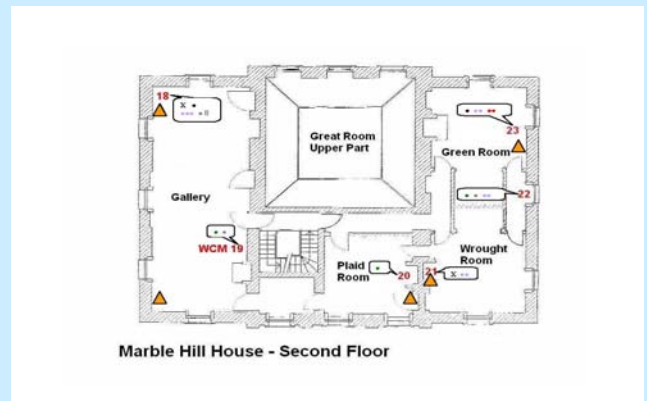
### MONITORING AND ANALYSIS

We negotiated to keep the monitoring and recording of this system 'in-house' by our own staff as they are trained and experienced in insect pest ID, trapping techniques and basic treatment methods. They received initial 1:1 training from the external pest control technicians so that they would be responsible thereafter for replacing the Exosex CL dispensers every six weeks.

This allowed us to note from our own quarterly monitoring trapping records whether the system is effective each year in decreasing and stabilising the number of clothes moths being caught on the traps. Results just over three years later have shown that the system has been effective and the moth counts have decreased with a total of 2 caught during 2010 compared to 41 in 2004 and 36 in 2006.

This result is very encouraging and we are continuing the trial in 2011.

Work/Room/Zone	Jan	Feb	Mar	Apr	May	Jun	Jul	Aug	Sep	Oct	Nov	Dec	Total	Notes
WCM 10	1	1	1	1	1	1	1	1	1	1	1	1	12	
WCM 11	1	1	1	1	1	1	1	1	1	1	1	1	12	
WCM 12	1	1	1	1	1	1	1	1	1	1	1	1	12	
WCM 13	1	1	1	1	1	1	1	1	1	1	1	1	12	
WCM 14	1	1	1	1	1	1	1	1	1	1	1	1	12	
WCM 15	1	1	1	1	1	1	1	1	1	1	1	1	12	
WCM 16	1	1	1	1	1	1	1	1	1	1	1	1	12	
WCM 17	1	1	1	1	1	1	1	1	1	1	1	1	12	
WCM 18	1	1	1	1	1	1	1	1	1	1	1	1	12	
WCM 19	1	1	1	1	1	1	1	1	1	1	1	1	12	
WCM 20	1	1	1	1	1	1	1	1	1	1	1	1	12	
WCM 21	1	1	1	1	1	1	1	1	1	1	1	1	12	
WCM 22	1	1	1	1	1	1	1	1	1	1	1	1	12	
WCM 23	1	1	1	1	1	1	1	1	1	1	1	1	12	
WCM 24	1	1	1	1	1	1	1	1	1	1	1	1	12	
WCM 25	1	1	1	1	1	1	1	1	1	1	1	1	12	
WCM 26	1	1	1	1	1	1	1	1	1	1	1	1	12	
WCM 27	1	1	1	1	1	1	1	1	1	1	1	1	12	
WCM 28	1	1	1	1	1	1	1	1	1	1	1	1	12	
WCM 29	1	1	1	1	1	1	1	1	1	1	1	1	12	
WCM 30	1	1	1	1	1	1	1	1	1	1	1	1	12	
WCM 31	1	1	1	1	1	1	1	1	1	1	1	1	12	
WCM 32	1	1	1	1	1	1	1	1	1	1	1	1	12	
WCM 33	1	1	1	1	1	1	1	1	1	1	1	1	12	
WCM 34	1	1	1	1	1	1	1	1	1	1	1	1	12	
WCM 35	1	1	1	1	1	1	1	1	1	1	1	1	12	
WCM 36	1	1	1	1	1	1	1	1	1	1	1	1	12	
WCM 37	1	1	1	1	1	1	1	1	1	1	1	1	12	
WCM 38	1	1	1	1	1	1	1	1	1	1	1	1	12	
WCM 39	1	1	1	1	1	1	1	1	1	1	1	1	12	
WCM 40	1	1	1	1	1	1	1	1	1	1	1	1	12	
WCM 41	1	1	1	1	1	1	1	1	1	1	1	1	12	
WCM 42	1	1	1	1	1	1	1	1	1	1	1	1	12	
WCM 43	1	1	1	1	1	1	1	1	1	1	1	1	12	
WCM 44	1	1	1	1	1	1	1	1	1	1	1	1	12	
WCM 45	1	1	1	1	1	1	1	1	1	1	1	1	12	
WCM 46	1	1	1	1	1	1	1	1	1	1	1	1	12	
WCM 47	1	1	1	1	1	1	1	1	1	1	1	1	12	
WCM 48	1	1	1	1	1	1	1	1	1	1	1	1	12	
WCM 49	1	1	1	1	1	1	1	1	1	1	1	1	12	
WCM 50	1	1	1	1	1	1	1	1	1	1	1	1	12	
WCM 51	1	1	1	1	1	1	1	1	1	1	1	1	12	
WCM 52	1	1	1	1	1	1	1	1	1	1	1	1	12	
WCM 53	1	1	1	1	1	1	1	1	1	1	1	1	12	
WCM 54	1	1	1	1	1	1	1	1	1	1	1	1	12	
WCM 55	1	1	1	1	1	1	1	1	1	1	1	1	12	
WCM 56	1	1	1	1	1	1	1	1	1	1	1	1	12	
WCM 57	1	1	1	1	1	1	1	1	1	1	1	1	12	
WCM 58	1	1	1	1	1	1	1	1	1	1	1	1	12	
WCM 59	1	1	1	1	1	1	1	1	1	1	1	1	12	
WCM 60	1	1	1	1	1	1	1	1	1	1	1	1	12	
WCM 61	1	1	1	1	1	1	1	1	1	1	1	1	12	
WCM 62	1	1	1	1	1	1	1	1	1	1	1	1	12	
WCM 63	1	1	1	1	1	1	1	1	1	1	1	1	12	
WCM 64	1	1	1	1	1	1	1	1	1	1	1	1	12	
WCM 65	1	1	1	1	1	1	1	1	1	1	1	1	12	
WCM 66	1	1	1	1	1	1	1	1	1	1	1	1	12	
WCM 67	1	1	1	1	1	1	1	1	1	1	1	1	12	
WCM 68	1	1	1	1	1	1	1	1	1	1	1	1	12	
WCM 69	1	1	1	1	1	1	1	1	1	1	1	1	12	
WCM 70	1	1	1	1	1	1	1	1	1	1	1	1	12	
WCM 71	1	1	1	1	1	1	1	1	1	1	1	1	12	
WCM 72	1	1	1	1	1	1	1	1	1	1	1	1	12	
WCM 73	1	1	1	1	1	1	1	1	1	1	1	1	12	
WCM 74	1	1	1	1	1	1	1	1	1	1	1	1	12	
WCM 75	1	1	1	1	1	1	1	1	1	1	1	1	12	
WCM 76	1	1	1	1	1	1	1	1	1	1	1	1	12	
WCM 77	1	1	1	1	1	1	1	1	1	1	1	1	12	
WCM 78	1	1	1	1	1	1	1	1	1	1	1	1	12	
WCM 79	1	1	1	1	1	1	1	1	1	1	1	1	12	
WCM 80	1	1	1	1	1	1	1	1	1	1	1	1	12	
WCM 81	1	1	1	1	1	1	1	1	1	1	1	1	12	
WCM 82	1	1	1	1	1	1	1	1	1	1	1	1	12	
WCM 83	1	1	1	1	1	1	1	1	1	1	1	1	12	
WCM 84	1	1	1	1	1	1	1	1	1	1	1	1	12	
WCM 85	1	1	1	1	1	1	1	1	1	1	1	1	12	
WCM 86	1	1	1	1	1	1	1	1	1	1	1	1	12	
WCM 87	1	1	1	1	1	1	1	1	1	1	1	1	12	
WCM 88	1	1	1	1	1	1	1	1	1	1	1	1	12	
WCM 89	1	1	1	1	1	1	1	1	1	1	1	1	12	
WCM 90	1	1	1	1	1	1	1	1	1	1	1	1	12	
WCM 91	1	1	1	1	1	1	1	1	1	1	1	1	12	
WCM 92	1	1	1	1	1	1	1	1	1	1	1	1	12	
WCM 93	1	1	1	1	1	1	1	1	1	1	1	1	12	
WCM 94	1	1	1	1	1	1	1	1	1	1	1	1	12	
WCM 95	1	1	1	1	1	1	1	1	1	1	1	1	12	
WCM 96	1	1	1	1	1	1	1	1	1	1	1	1	12	
WCM 97	1	1	1	1	1	1	1	1	1	1	1	1	12	
WCM 98	1	1	1	1	1	1	1	1	1	1	1	1	12	
WCM 99	1	1	1	1	1	1	1	1	1	1	1	1	12	
WCM 100	1	1	1	1	1	1	1	1	1	1	1	1	12	



### CATCH OF WEBBING CLOTHES MOTH FROM 2004 - 2010

